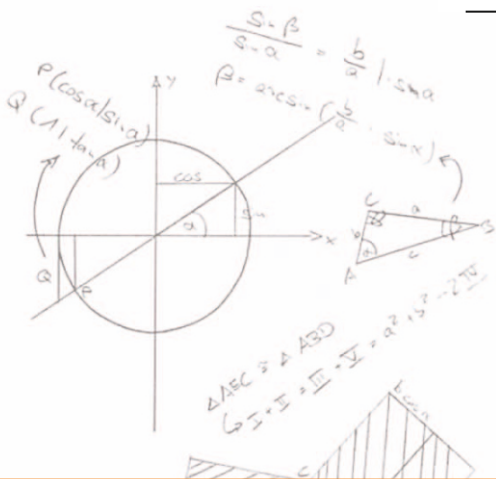


# THE FOURTH GENERATION SMART E-BLACKBOARD



e-blackboard G4.0

4th generation



Interactive display, traditional blackboard  
and multi-touch panel **all-in-one**

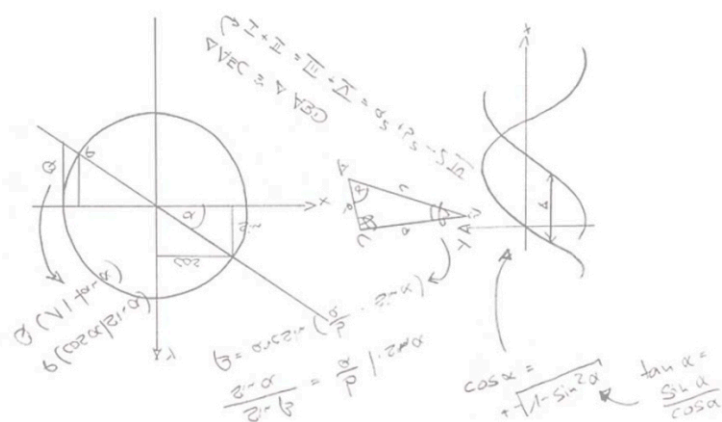
# Smart Philosophy



e-Blackboard combines a traditional blackboard with an interactive capacitive touch screen. The technology of the future adapted to all the comforts in teaching. On e-Blackboard it is possible to write with chalk or liquid ink, while playing videos, PDFs, images, PowerPoint presentations, etc. through its integrated Android 8.0 device.

It allows incorporating an OPS computer with Windows 10 PRO (optional), thus offering full functionality and autonomous use in the classroom or meeting room. At the same time, it allows the connection of computers or external devices thanks to its multiple HDMI, VGA and Wireless inputs.

The touch surface finish is matte black glass and allows writing directly on top of the screen and on the side panels as if it were a classic whiteboard, combining the best of two technologies, analogy and digital, in a comfortable way.



According to the ICT managers of several educational centres where e-Blackboard has been installed:

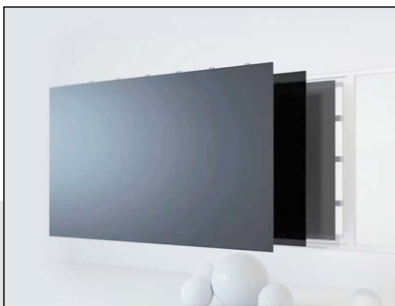


*“The evaluation of the students is excellent because it allows them to access digital resources from the same space on the traditional blackboard.”*

*“The choice of e-Blackboard is based on the need to optimize space by accessing digital resources without giving up a work area with which the traditional method can also be used.”*



Perfect for those centres or environments where image plays an important role: business schools, highly technological environments, corporate centres, etc. Its matte black anti-reflective finish, with a polished aluminium frame, and all the integrated elements make the e-Blackboard an elegant and attractive device as well as functional.



Viewing angle 178°



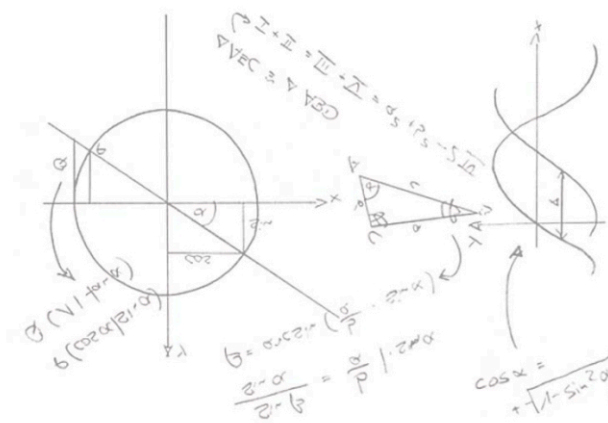
Front access to connections



Complete comprehensive system

# Technology

## Hardware



### Fully inscribable surface

Photoelectric glass supports chalk writing, dust-free chalk and liquid chalk. Surface treatment of great hardness and anti-scratch, which ensures the integrity during the entire life of the product. In addition, it is anti-reflective, which makes it easy to see the board from all angles (178°).



### Capacitive touch screen

The LCD screen offers 4K resolution and supports up to 10 simultaneous touch points. High transmission nanometric technology offers unmatched capacitive touch sensitivity, ensuring greater reliability and precision of use.



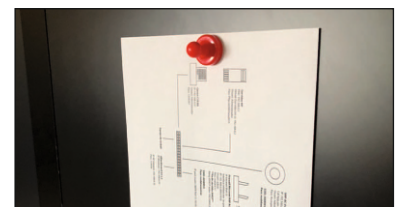
### Integrated amplified audio system

e-Blackboard integrates two stereo speakers in the lower part of the board, offering a high quality of sound during the reproduction of audio-visual materials. Additionally, it can be connected to an amplified audio system.



### Magnetic sides

NH models have passive writable panels that are also compatible with magnets for holding documents and other types of magnetic elements.



### Configurable pen

With the capacitive stylus you can work with greater precision while increasing your efficiency thanks to the (4) shortcut buttons. Allowing to pass the slide, control the volume, etc.





### Integrated Windows 10 Pro / Android 8 OS

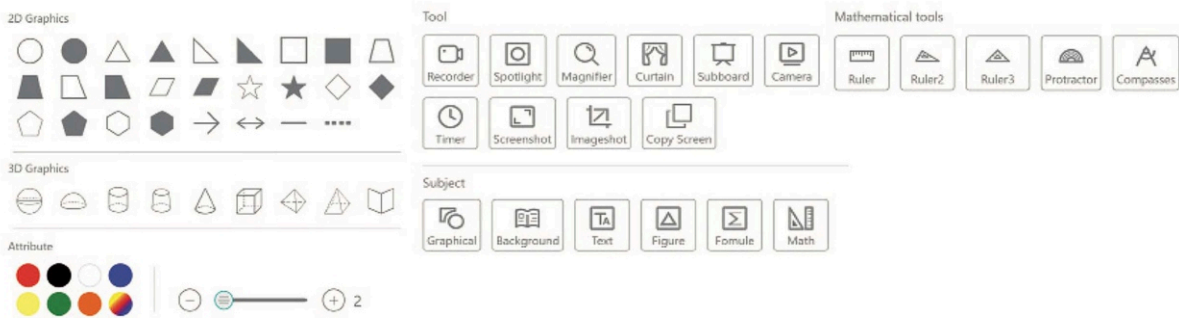
All models integrate the Android 8 operating system and optionally Windows 10 PRO, which gives the board complete autonomy, or they can be ordered without an internal computer, in order to take advantage of the user's computer equipment externally. In any case, it will always be possible to connect external equipment even if the unit already includes OPS.

### Yiouboard Software

Android 8 includes a pre-installed license of the whiteboard software for classroom use or to assist in presentations. It can also be downloaded for Windows 10 PRO.

#### Main features:

- Freehand writing and presentation assistant
- Virtual focus of attention, allows to illuminate important areas to fix the attention
- Advanced tools: mathematics, geometric shapes, etc ...



### Chalk capture mode

The DC860BG model incorporates a utility to capture the traces made with chalk in the passive area of the blackboard.

It is also compatible with all Windows and Android applications, such as Microsoft Office 365, digital whiteboard programs, browsers, collaboration environments in the cloud, video conferencing, etc..



# Formats

e-Blackboard is available in various mounting configurations to suit the job and space needs of each facility. In all cases, the glass supports chalk writing, even on models without side panels.

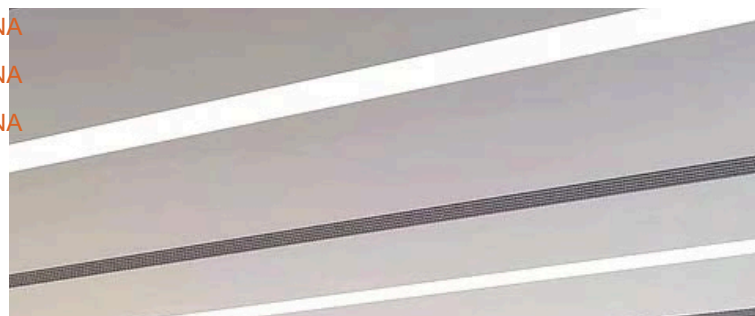


## COMPACT

DC980NA

DC860NA

DC750NA

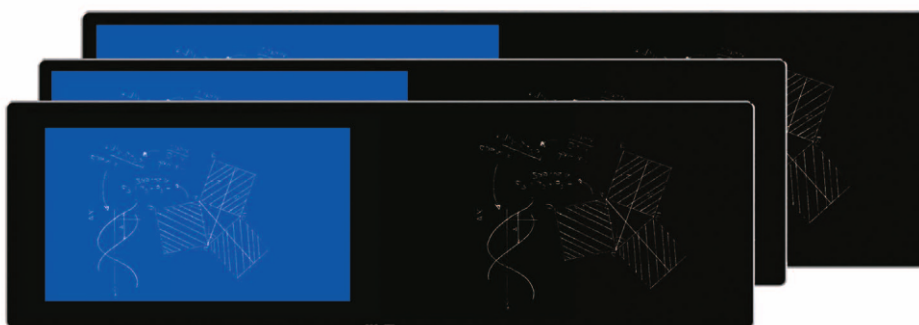


## FULL SIZE 4M

DC980NH

DC860NH

DC750NH



## CAPTURE

DC980BG

DC860BG

DC750BG



## DUAL

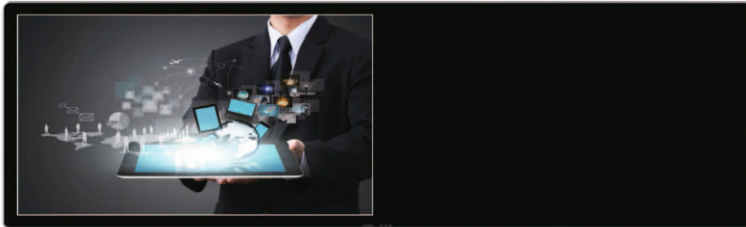
DC980BD

DC860BD



# Special formats:

e-Blackboard can be made on demand combining all types of LCD active panels, capture panels and passive panels:



**LCD + SIDE 2m**

Passive side to left or right



**LCD + SIDE 0,5m**

Passive side to left, right or both sides



**DUAL LCD + SIDE**

Passive side to left or right



**CAPTURE + SIDE**

Passive side to left

## Accessories



PTZ camera



Liquid chalk and marker



OPS Intel i5 / i7

# e-blackboard G4.0

4th generation

Model:	DC750NA	DC750NH	DC860NA	DC860NH	DC860BG	DC860BD	DC980NA	DC980NH	DC980BG	DC980BD
Reference	ODN103	ODN104	ODN108	ODN100	ODN109	ODN110	ODN111	ODN112	ODN113	ODN114
Bright	450 cd/m <sup>2</sup>	450 cd/m <sup>2</sup>	450 cd/m <sup>2</sup>	450 cd/m <sup>2</sup>	450 cd/m <sup>2</sup>	450 cd/m <sup>2</sup>	450 cd/m <sup>2</sup>	450 cd/m <sup>2</sup>	450 cd/m <sup>2</sup>	450 cd/m <sup>2</sup>
Contrast	4000:1									
Color temperature	10.000 K									
Resolution	3840 x 2160	3840 x 2160	3840 x 2160	3840 x 2160	3840 x 2160	2 x (3840 x 2160)	3840 x 2160	3840 x 2160	3840 x 2160	2 x (3840 x 2160)
Viewing angle	178°									
Lifetime (active panel)	≥ 50.000 h									
Screen size (mm)	1650 x 928	1650 x 928	1895 x 1066	1895 x 1066	1895 x 1066	2 x (1895 x 1066)	2170 x 1220	2170 x 1220	2170 x 1220	2 x (2170 x 1220)
Total size W x H x D (mm)	2000 x 1250 x 70	4000 x 1250 x 70	2000 x 1250 x 70	4000 x 1250 x 70	4000 x 1250 x 70	4000 x 1250 x 70	2250 x 1450 x 70	4500 x 1450 x 70	4500 x 1450 x 70	4500 x 1450 x 70
Panels	1 central LCD	1 central LCD + 2 sides 1m	1 central LCD	1 central LCD + 2 sides 1m	1 LCD + 1 capture	2 LCD	1 central LCD	1 central LCD + 2 sides 1m	1 LCD + 1 capture	2 LCD
Passive magnetic glass	No	Si	No	Si	No	No	No	Si	No	No
OPS (accessory)	CPU Intel Core i5 ( consultar i3, i7 ) 8GB DDR4 - 256GB SSD / Includes Microsoft Windows 10 PRO license									
Network	Ethernet: 10M / 100M Wireless: Double frequency 2.4G, 5G + Access point									
Tactile function	Capacitive technology. 20 tactile points over photoelectric glass ≤ 2mm A additional drivers required on Windows systems; 1 tactile point on Mac OS									
Input /output ports	1 x VGA; 3 x HDMI 2.0; 1 x HDMI; 1 x RJ45; 1 x RS232; 1 x USB tactile; 2 x USB 2.0; 2 x USB 3.0; Audio Minijack ( 1 x output ; 1 x input)									
Audio	Integrated speakers 2 x 12 W									

Special and lateral measures: consult  
 Optional OPS i5 / i7  
 Camera, mounts and optional accessories  
 Warranty 3 years

Interactive display, traditional blackboard and  
 multi-touch panel **all-in-one**